

HAND PUSH SEEDER MACHINE



MODEL NO : VAM-12H2



Performance and characteristics of seeders

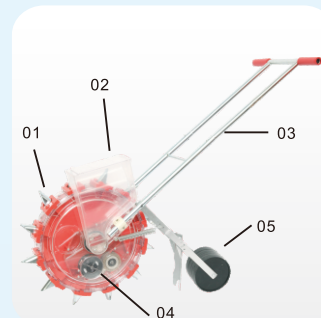
1. This product is applicable to the ploughed land with or without ridge in plain, mountainous area and hill.
2. The hand-propelled seeding in a rolling manner is easy and efficient, and environmental-friendly.
3. The transparent polycarbonate engineering plastic used make the seeding can be directly seen and is solid and durable.
4. The design is scientific and the seeding is accurate. The planting distance and density can be adjusted at any time according to requirement.

Suitable seeds	maize, beans, peanuts, cotton, sunflow seeds etc.(like round seeds)
Function	plant maize, beans and other grain seeds into no-tilled soil
Hole seeding rate	1-2 adjustable
Seeding depth	35-78mm
Work efficiency	0.55-2ha./day or more
Seeds Box	3.7kg
space(seed to seed)	15cm-30cm(can adjust)
Spike number	12 (can adjust) can change 6,7,8,9,10,12 mouth

Precautions:

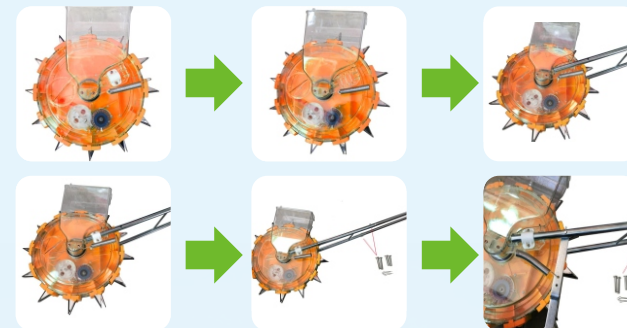
1. Move forward according to the direction pointed by arrow and the speed shall not be too fast.
2. After the seed is selected and put into it, the machine shall be normally idled for a circle before being used for seeding.
3. Adjust the handle and soil spreading plate spring to ensure the soil spreading and pressing effect of seed.
4. Clean and dry the machine and oil bearing and iron nozzle after the use.

STRUCTURE DIAGRAM OF HAND PUSH SEEDER



- 01:SEED NOZZLE
02:SEED BOX
03:SEEDER HANDLE
04:SEED WHEEL
05:SEEDER PRESS WHEEL

AA: HAND PUSH SEEDER MACHINE INSTALLATION DIAGRAM



- 01:loosen the screw of the pressing plate
02:install the seeder handle
03:install the press wheels

HOW TO CHANGE TO THE SEED WHEELS

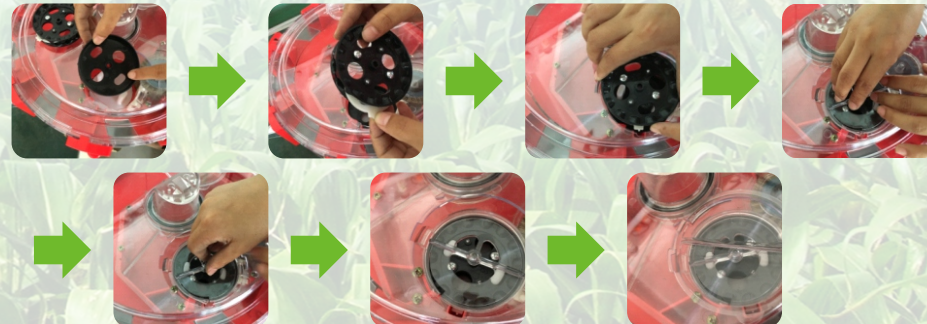
1. Rotate the reseed connecting rod to off position and screw off reseed cap.



2. Take out the seed wheels in turn



3. Put the seed wheels in turn

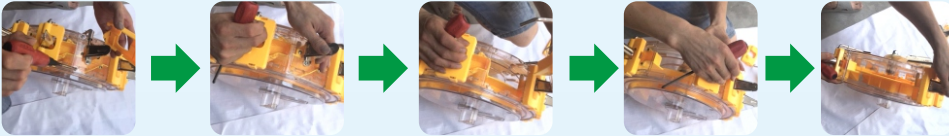


HOW TO CHANGE THE SEED TO SEED DISTANCE

01: Remove seed box



02: finde the seeder side piont "B",and lose the screw,than take all the nozzles out in turn



03:Find a plastic link marking No. 10 ,Screw the B point with a screw ,Then insert the nozzle and mark No10 plastic connector in turn. This adjusts the 12 mouth to the 10 mouth .



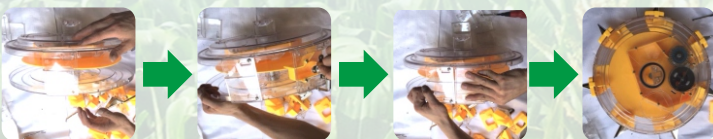
04:Find a plastic link marking No.9 ,Screw the B point with a screw ,Then insert the nozzle and mark No 9 plastic connector in turn. This adjusts the 12 mouth to the 9 mouth .



05:Find a plastic link marking No.8 ,Screw the B point with a screw ,Then insert the nozzle and mark No 8 plastic connector in turn. This adjusts the 12 mouth to the 8 mouth .



06:Find a plastic link marking No.7 ,Screw the B point with a screw ,Then insert the nozzle and mark No 7 plastic connector in turn. This adjusts the 12 mouth to the 7 mouth .



07:Find a plastic link marking No.6 ,Screw the B point with a screw ,Then insert the nozzle and mark No 6 plastic connector in turn. This adjusts the 12 mouth to the 6 mouth .



ITEM NO	IMAGE	USES
NO.:0		no seeds
NO.:1		rye and small round seeds
NO.:2		moong,green gram,coriander
NO.:5		corn,peanuts,beans (like round seeds)
NO.:11		corn,peanuts,beans (like round seeds)
NO.:22		corn,peanuts,beans (like round seeds)
NO.:33		corn,peanuts,beans (like round seeds)
NO.:44		corn,peanuts,beans (like round seeds)
COTTON		cotton,moong,green gram,coriander
NO.:77		peanuts
NO.:88		moong,green gram,coriander
CUCUMBER		rice,cucumber
ADJUSTABLE DISC		peanuts